

NAME: \_\_\_\_\_

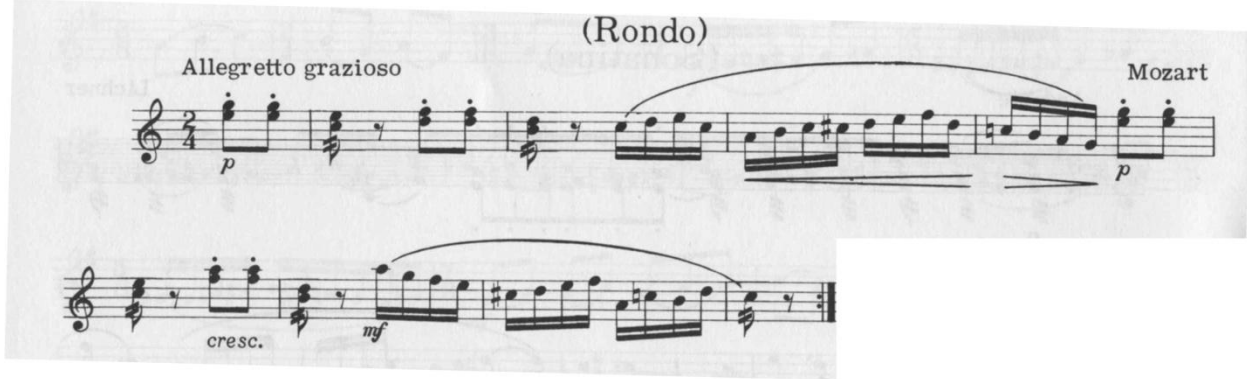
**Buckhorn HS Band Percussion Auditions- Fall 2009**

**Scales (4 Pts. Each, 2 octaves All-State Pattern w/ Arpeggio)**

CM: \_\_\_\_\_ FM: \_\_\_\_\_ BbM: \_\_\_\_\_ EbM: \_\_\_\_\_ AbM: \_\_\_\_\_ DbM: \_\_\_\_\_  
F#M: \_\_\_\_\_ BM: \_\_\_\_\_ EM: \_\_\_\_\_ AM: \_\_\_\_\_ DM: \_\_\_\_\_ GM: \_\_\_\_\_

SUBTOTAL: \_\_\_\_\_/48

**Keyboard Etude (Poss. 30 Pts.)**



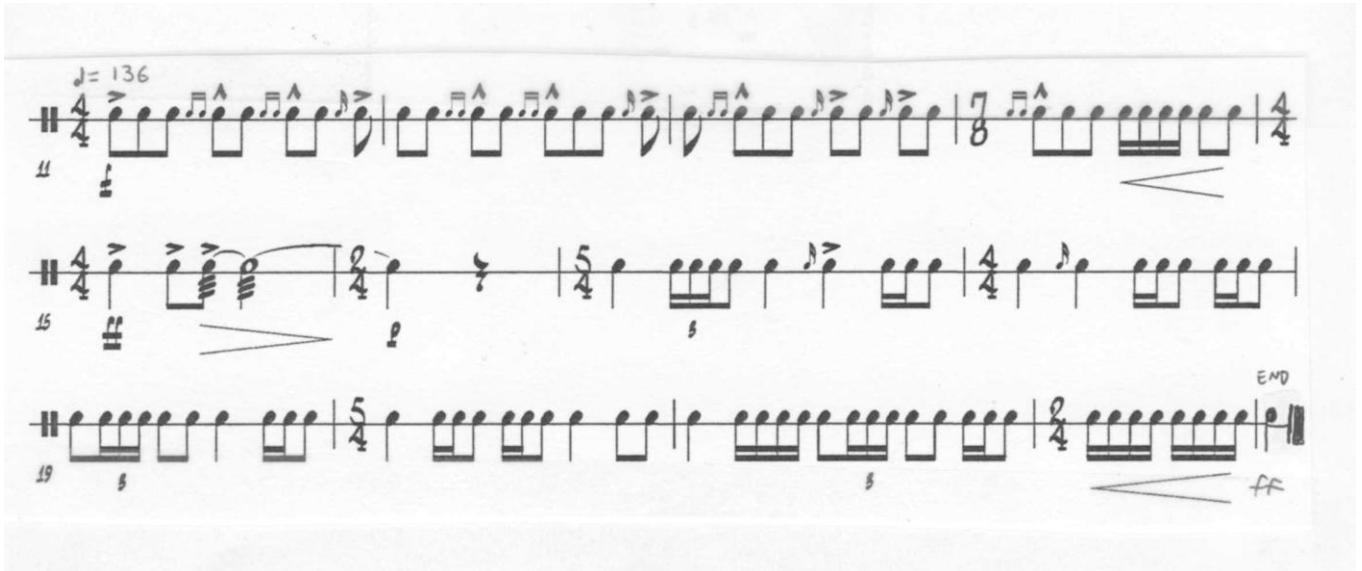
SUBTOTAL: \_\_\_\_\_/30

**Rudiments (10 pts. Each, play Flam Accent and Flam Taps Open-Closed-Open)**

Buzz Roll (16 counts at  $q=120$ ,  $pp<ff>pp$ ): \_\_\_\_\_ Flam Accent: \_\_\_\_\_ Flam Taps: \_\_\_\_\_

SUBTOTAL: \_\_\_\_\_/30

**Snare Etude (Poss. 40 Pts.)**



SUBTOTAL: \_\_\_\_\_/40

**Timpani Tuning (5 Pts Ea.)**

Tune 29" Drum to an Ab: \_\_\_\_\_ Tune 26" drum a P4 Higher: \_\_\_\_\_ Tune 26" drum a P5 Higher: \_\_\_\_\_

SUBTOTAL: \_\_\_\_\_/15

**Sight Reading on Instrument of Choice (Mallets or Snare, Poss. 20 Pts.)**

SUBTOTAL: \_\_\_\_\_20

TOTAL: \_\_\_\_\_/183